

The dataset contains data for this study:

Elemental microanalyses.

Electrospray mass spectra.

^1H and ^{13}C NMR spectra (raw and processed data).

X-ray Crystallographic data:

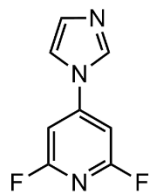
- Structure of 2,6-difluoro-4-(imidazol-1-yl)pyridine (CCDC 1997941).
- Structure of α -L (CCDC 1997942).
- Structure of β -L (not deposited with the CCDC).
- Structure of $[\text{Ag}(\mu\text{-L})]\text{BF}_4 \cdot \frac{1}{2}\text{CH}_3\text{CN}$ (CCDC 1997943).
- Structure of $[\text{FeL}_2][\text{BF}_4]_2$ (CCDC 1997944).
- Structure of $[\text{FeL}_2][\text{ClO}_4]_2$ (CCDC1997945).
- Structure of $[\text{Fe}_3(\mu\text{-F})_2\text{F}_6\text{L}_8]\text{BF}_4 \cdot 2.5\text{CH}_3\text{OH}$, hexagonal pseudopolymorph (CCDC 1997946).
- Structure of $[\text{Fe}_3(\mu\text{-F})_2\text{F}_6\text{L}_8]\text{BF}_4 \cdot x\text{CH}_3\text{OH}$, tetragonal pseudopolymorph (preliminary structure solution - not deposited with the CCDC).

X-ray powder diffraction data (measured and simulated).

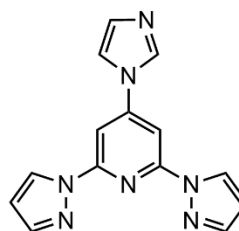
Solid state magnetic susceptibility measurements (raw and processed data).

Solution magnetic susceptibility measurements (Evans method; raw and processed data).

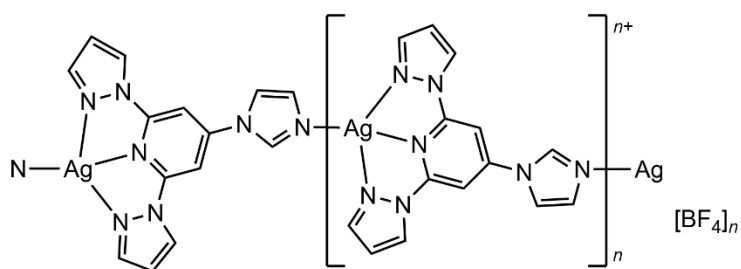
Compounds referred to in this dataset



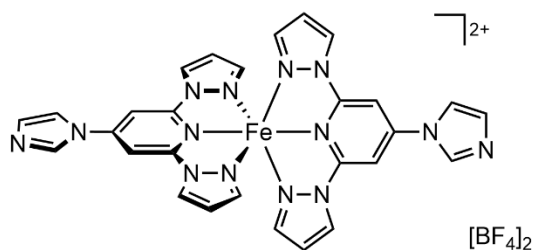
2,6-Di(fluoro)-4-(imidazol-1-yl)pyridine
C₈H₅F₂N₃



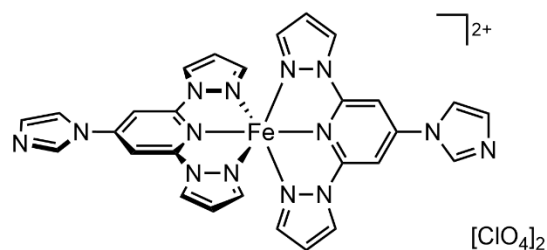
4-(Imidazol-1-yl)-2,6-di(pyrazol-1-yl)pyridine
C₁₄H₁₁N₇



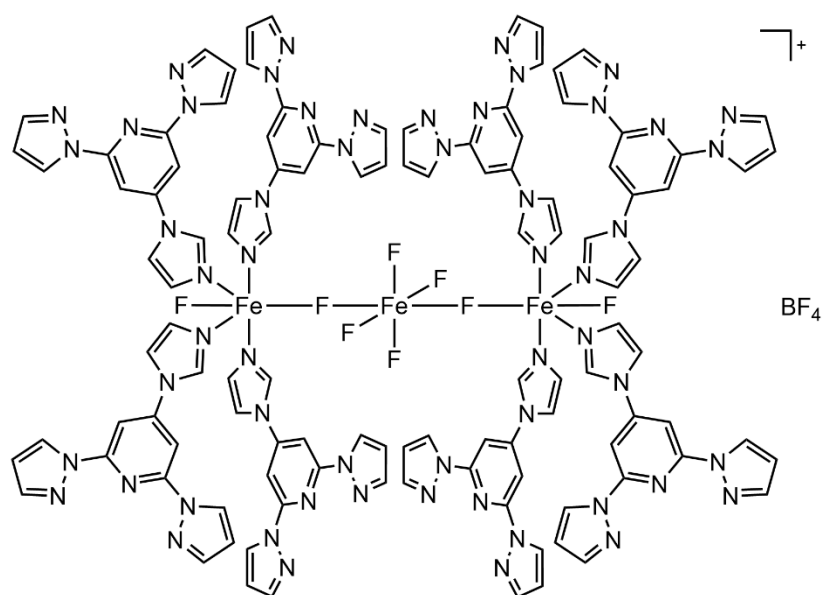
[Ag(μ -L)]BF₄
catena-[4-(imidazol-1-yl)-2,6-di(pyrazol-1-yl)pyridine]silver(I) tetrafluoroborate
C₁₄H₁₁AgBF₄N₇



[FeL₂][BF₄]₂
Bis[4-(imidazol-1-yl)-2,6-di(pyrazol-1-yl)pyridine]-
iron(II) di(tetrafluoroborate)
C₂₈H₂₂B₂F₈FeN₁₄



[FeL₂][ClO₄]₂
Bis[4-(imidazol-1-yl)-2,6-di(pyrazol-1-yl)pyridine]-
iron(II) diperchlorate
C₂₈H₂₂Cl₂FeN₁₄O₈



[Fe(μ -F)₂F₆L₈][BF₄]₂
Octakis-[4-(imidazol-1-yl)-2,6-di(pyrazol-1-yl)pyridine]octafluoro-triiron(III) tetrafluoroborate
C₁₁₂H₈₈BF₁₂Fe₃N₅₆