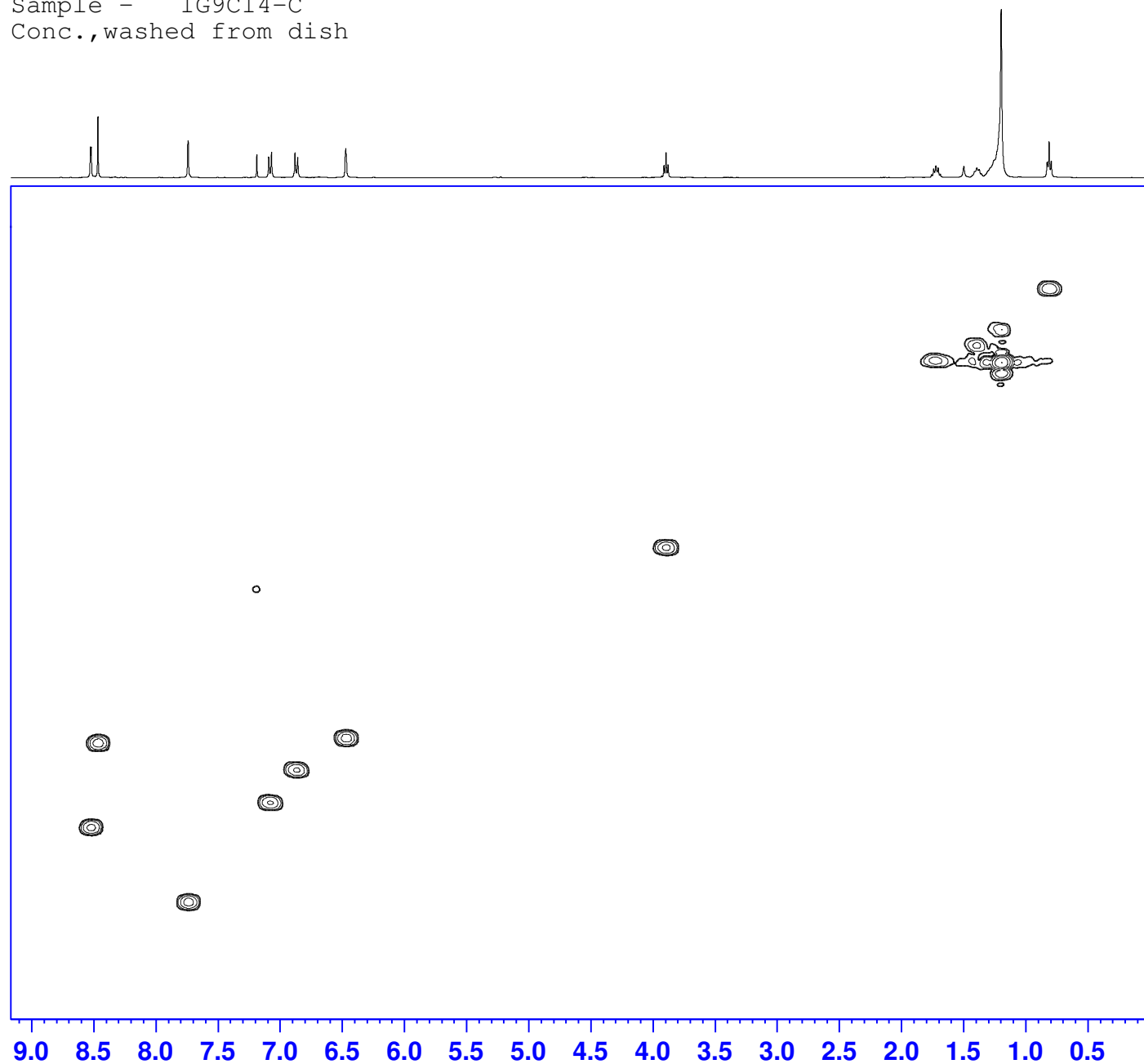


Name - Iurii  
Room No. - 1.25  
Sample - IG9C14-C  
Conc., washed from dish



Current Data Parameters  
NAME IG9C14-C  
EXPNO 13  
PROCNO 1

F2 - Acquisition Parameters  
Date\_ 20170327  
Time 4.51  
INSTRUM spect  
PROBHD 5 mm PABBO BB/  
PULPROG hmcgcpqf  
TD 1024  
SOLVENT CDCl3  
NS 8  
DS 16  
SWH 3676.471 Hz  
FIDRES 3.590303 Hz  
AQ 0.1392640 sec  
RG 201.96  
DW 136.000 usec  
DE 6.50 usec  
TE 300.0 K  
CNST2 145.0000000  
D0 0.0000300 sec  
D1 1.44804895 sec  
D2 0.00344828 sec  
D12 0.00002000 sec  
D13 0.00000400 sec  
D16 0.00020000 sec  
INO 0.00002840 sec

===== CHANNEL f1 =====  
SFO1 400.1318693 MHz  
NUC1 1H  
P1 9.50 usec  
P2 19.00 usec  
PLW1 17.00000000 W

===== CHANNEL f2 =====  
SFO2 100.6208175 MHz  
NUC2 13C  
CPDPRG[2] garp  
P3 9.10 usec  
PCPD2 80.00 usec  
PLW2 75.00000000 W  
PLW12 0.97043002 W

===== GRADIENT CHANNEL =====  
GPNAM[1] SMSQ10.100  
GPNAM[2] SMSQ10.100  
GPNAM[3] SMSQ10.100  
GPZ1 50.00 %  
GPZ2 30.00 %  
GPZ3 40.10 %  
P16 1000.00 usec

F1 - Acquisition parameters  
TD 80  
SFO1 100.6208 MHz  
FIDRES 220.070419 Hz  
SW 174.970 ppm  
FnMODE QF

F2 - Processing parameters  
SI 1024  
SF 400.1300384 MHz  
WDW GM  
SSB 0  
LB -50.00 Hz  
GB 0.15  
PC 1.40

F1 - Processing parameters  
SI 1024  
MC2 QF  
SF 100.6127685 MHz  
WDW QSINE  
SSB 8  
LB 0 Hz  
GB 0